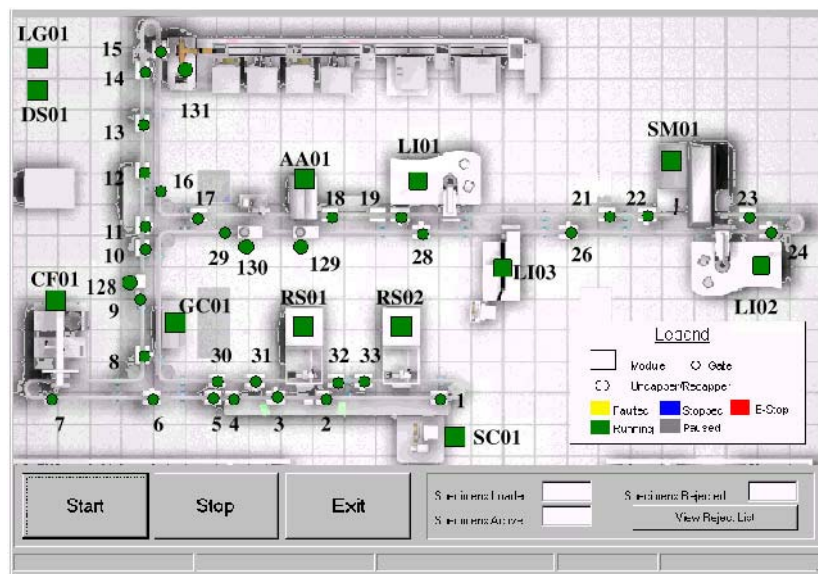


Automation System Controller

Module Description

All modules in the automation system are under the control of the Automation System Controller (ASC), a computer and software control system. The customer's LIS sends specimen routing and/or test order information to the ASC and the ASC provides information to the LIS regarding specimen status and location, on a near real time basis.



General Specifications

- Computer: Pentium II ≥ 400 mhz
- Memory: ≥ 64 mb
- Monitor: ≥ 15" touch screen
- UPS
- Operating System: Windows NT
- Communications: 2 ethernet, 1 RS485/RS232, 1 RS485 concentrator

Features

- Routes specimens using LIS test requests
- Reports specimen status
- Stat priority handling
- User friendly

Benefits

- Creates steady work flow process
- Reduces turn around time
- Reduces errors